

UL  
30 AMP  
1 POLE UNIT  
LISTED  
UL  
ISSUE NO. SR-109

M SERIES  
30 AMP  
1 POLE UNIT  
LISTED  
UL  
ISSUE NO. SR-109

M SERIES  
30 AMP  
1 POLE UNIT  
LISTED  
UL  
ISSUE NO. SR-109

M SERIES  
30 AMP  
1 POLE UNIT  
LISTED  
UL  
ISSUE NO. SR-109

M SERIES  
30 AMP  
1 POLE UNIT  
LISTED  
UL  
ISSUE NO. SR-109

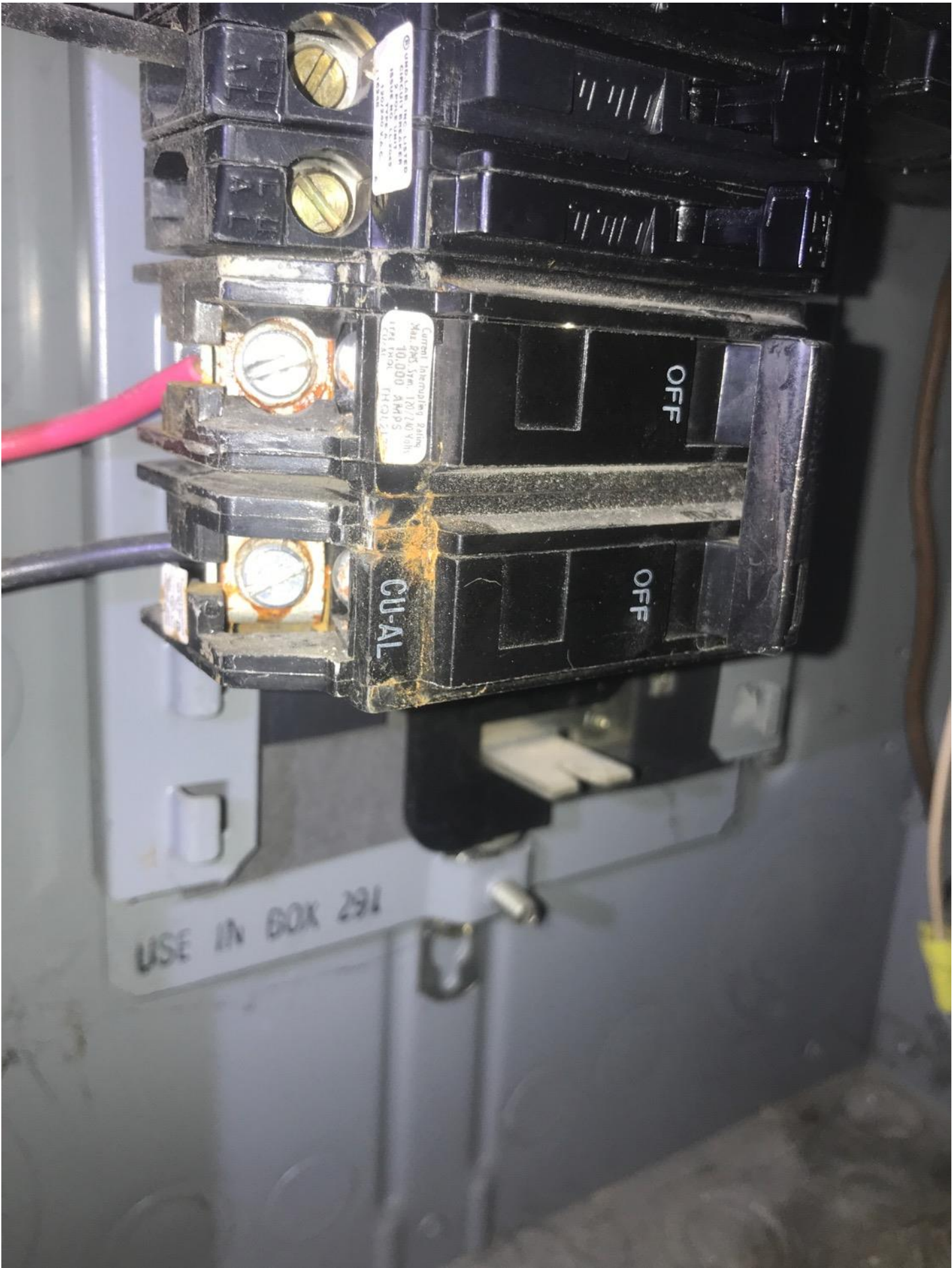
M SERIES  
30 AMP  
1 POLE UNIT  
LISTED  
UL  
ISSUE NO. SR-109

M SERIES  
30 AMP  
1 POLE UNIT  
LISTED  
UL  
ISSUE NO. SR-109

ABB  
30A  
1 POLE UNIT  
LISTED  
UL  
ISSUE NO. SR-109

ABB  
30A  
1 POLE UNIT  
LISTED  
UL  
ISSUE NO. SR-109

UL  
30 AMP  
1 POLE UNIT  
LISTED  
UL  
ISSUE NO. SR-109



Small white label on the top breaker with technical specifications, including '1000V' and '100A'.

Label on the middle breaker: (Current Interrupting Rating) Max DC 575V, 100/200Vdc, 100/1000 AMPS, 100/1000 RMS, 100/1000 RMS

OFF

OFF

CU-AL

USE IN BOX 291